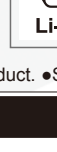


3+ years old and above

# VITAL BRACELET

## DIGITAL MONSTER



This product is powered with Lithium-ion polymer batteries. Please follow your local district and area rules when discarding the product.

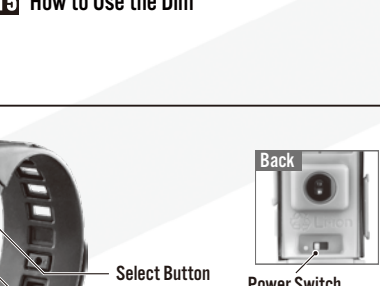
This instruction manual applies to **VER BLACK** and **VER WHITE**. Images used in the instruction manual may not reflect the actual product. ©Lemon

### Notice

#### Please read before use.

- The product is intended for ages 8 and older. Do not give the product to anyone below the specified age.
- **Caution**
- Please read the instruction manual.
- Magnets are used on the product's electronic components. Please do not use the product with pacemakers.
- Do not touch on the LED screen or the flashing sensor lights for an extended period. • Long-term use of the device's batteries may lead to overheating, exploding, fires, and fluid leakage. Please read the following Caution content.
- Do not short circuit the product under any circumstance.
- Do not charge the product when it is fully charged as it can lead to short circuiting.
- Do not wet, place in fire, take apart, or solder the product.
- Do not use the power cord near fire, use, charge, and store under extreme temperatures and conditions.
- Do not use the product under cold temperatures. The cold may affect the battery, and prevent proper function of the product.
- We are not responsible for loss of data from use of the product.

- Charge the product in a visible location and away from combustible.
- Check the product and power cable after charging. Do not use if the product or the power cable is broken or worn.
- Remove the power cable and stop use of the product if the product is hot, an unusual odor can be smelled, the product warms, smoke can be seen, or any other anomalies are detected while charging or using the product.
- Remove the power cable and stop use of the product if the product does not show that it is being charged, or the product does not charge.
- Do not leave the power cable connected to the product after the product is charged.
- Do not wrap limbs or fingers with the power cable as it can strangle blood flow.



### Usage Warnings

- Discard plastic packaging immediately after opening.
- Magnets are used on the product's electronic components. Please do not use the product with pacemakers.
- Do not forcibly pull or bend moveable parts or attachments.
- This product is composed of various electronic components. Do not drop, wet, dirty, or dismantle the product. Do not use or store the product under extreme temperatures.
- Turn the power off and back on again if the product encounters an error.
- Use the power cable specific to the product. Do not use any conventional power cable to charge the product.
- Do not tug on the cord when removing the power cable as it can break and lead to complications.
- Do not use the product under cold temperatures. The cold may affect the battery, and prevent proper function of the product.
- We are not responsible for loss of data from use of the product.

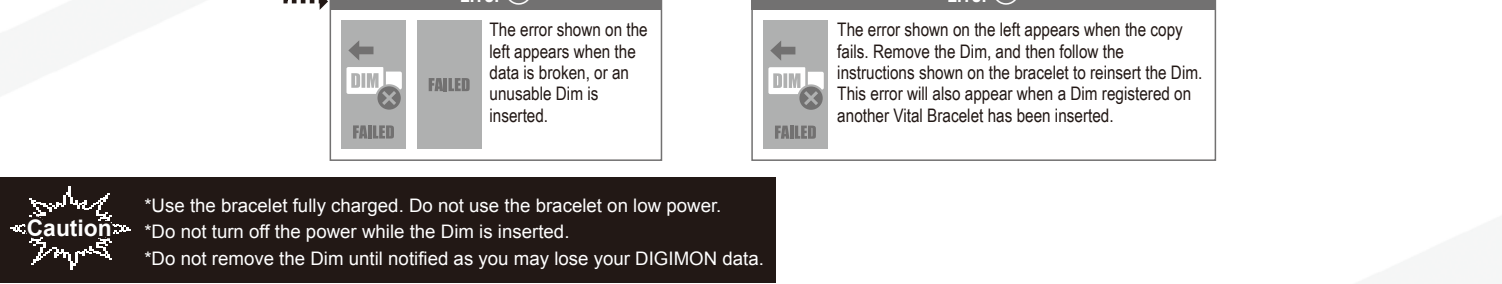
### What is the Vital Bracelet?

The ultimate in devices, "VITAL BRACELET", brings play to your daily life by utilizing the number of steps you take and your heartbeat. This wearable device lets you train and Digivolve characters based on data derived from your activity.

### Table of Contents

- 1 Turning the Power On and Charging the Bracelet
- 2 Setting the Date and Time
- 3 Initial Dim User Registration
- 4 A DIGIMON is Born
- 5 The Home Screen
- 6 Status Information
- 7 Battles
- 8 Missions
- 9 Digivolution
- 10 Battles
- 11 Death and Injury
- 12 Digivolution
- 13 Backup
- 14 Using the App
- 15 How to Use the Dim
- 16 Using the VS Dim
- 17 Settings

### Content Description



### 1 Turning the power on and charging the bracelet

Push the power switch on the back of the Vital Bracelet toward the "P" part until you hear a click.  
Do not look directly at the sensor light. It may cause nausea or other visual disorders.

#### How to charge the bracelet

- Charge the product in a visible location and away from combustible.
- Check the product and power cable after charging. Do not use if the product or the power cable is broken or worn.
- Remove the power cable and stop use of the product if the product is hot, an unusual odor can be smelled, the product warms, smoke can be seen, or any other anomalies are detected while charging or using the product.
- Remove the power cable and stop use of the product if the product does not show that it is being charged, or the product does not charge.
- Do not leave the power cable connected to the product after the product is charged.
- Do not wrap limbs or fingers with the power cable as it can strangle blood flow.

2 Setting the Date and Time

① Press the Select Button to set the date, day, and time.  
② Use the screen with "Dim" to set the year, month, and time.

Use the Select Button to choose the "Year", and then press the Confirm Button to transition to the "Month" and the "Day". Use the Confirm Button to choose "OK" to transition to the time setting. Choose "NG" to return to the "Year" setting.  
\*You can cycle between "Year", "Date", and "Time" by holding down on the Select Button.  
\*Clock precision: approximately ±10 seconds daily.

3 Initial Dim User Registration

The Dim registers the user information used with the Vital Bracelet when initially inserted. Once used, the Dim cannot be used on other Vital Bracelets.

Remove the Dim from the Dim card. → Insert the Dim into the Dim slot on the Vital Bracelet. → Data transfer → Transfer complete → Removing the Dim

The data stored within the Dim will copy the data into the Vital Bracelet. It will take approximately 50 seconds for the copying to complete.

Once the copy is done, the Dim's information will display.

Remove the Dim once the image on the right displays.

4 A DIGIMON is born

Wearing your Vital Bracelet → Hatching your Dig-Egg → Your very own DIGIMON → Transition to the home screen

Put the Vital Bracelet on when the image on the right appears.  
The Dig-Egg will hatch using the copied data from the Dim.  
Once the data is read, your DIGIMON will appear from the hatched Dig-Egg.  
You will transition to the home screen where you can begin training your DIGIMON.

5 The Home Screen

The DIGIMON's mental state is broken into 3 levels. The DIGIMON attacks power during battles, and the amount of VITAL points you gain from exercise and training changes depending on the DIGIMON's mental state.

The conditions required for the mental state to change differs between DIGIMONS.

Good, Normal, Bad

Running, Training, Walking, Idle, Sleeping, Injured, Healing, Item Effect, Bracelet Not Worn

The DIGIMON will be idle when you are not exercising or having any major physical activity while you have the Vital Bracelet on.

6 Screen Information

Press the Select Button to cycle through the icons. Press the Confirm Button to view details of the selected icon.

Dim, Status, DIGIMON, Mission, Backup, App, Settings

DIGIMON's sleep hours

The time when the DIGIMON goes to sleep differs depending on the DIGIMON.

The VITAL value does not change while sleeping.  
\*This product is powered with Lithium-ion polymer batteries. The power may not go on if the product has not been sufficiently charged.

The VITAL value will reset when the date changes, even while the DIGIMON is asleep.  
The VITAL value does not change while the DIGIMON is asleep. Use this opportunity to remove and charge the Vital Bracelet.

7 Status Information

Press the Select Button to cycle through the screen with the menu.

VITAL confirmation screen → Heartbeat confirmation screen → Calibrate base heartbeat rate

While on the VITAL confirmation screen, press the Select Button to check the VITAL value.  
\*The VITAL value changes depending on your "heartbeat", "Mile", and "batte result".  
\*How much your VITAL value increases depends on the DIGIMON's mental state.

While on the heartbeat confirmation screen, press the Select Button to check on your Miles.  
\*The Miles is strictly a game based value, and is not medically accurate.

While on the mile confirmation screen, press the Select Button to check on your Miles.  
\*The Miles is strictly a game based value, and is not medically accurate.

8 Missions

Missions are available when the DIGIMON reaches its Rookie generation.

Normal mission → Hard mission

While on the normal mission screen, press the Confirm Button to check the mission for that day.  
\*Only 1 mission can be done per day.  
\*The word "CLEAR" appears on the screen if the mission is cleared. The mission may be available when it date changes.

While on the hard mission screen, press the Select Button to switch to the special mission screen. Special mission can be selected by using the app. For details on using the app, please see "14 Using the App".

Adventure mission has a set goal for each stage. You can face enemy DIGIMONS in battle only after reaching the mile goal.

9 Digivolution

The DIGIMON will Digivolve (evolve) based on your VITAL value, trophies, win rate, and Digivolution Timer.

VITAL → Trophies → Win Rate → Digivolution Timer

You can gain VITAL points by clearing missions. Please see "8 Missions" to learn more about gaining VITAL points.  
Gain trophies by clearing missions. Please see "8 Missions" to learn more about gaining trophies.  
The win rate changes depending on battle results. Please see "10 Battles" to learn more to battle.

The timing of when a DIGIMON can Digivolve varies depending on the DIGIMON's generation.  
The DIGIMON may Digivolve into a different form depending on the VITAL value, trophies gain, and win rate.  
\*The Digivolution Timer will start counting from when the DIGIMON Digivolves.  
\*The Digivolution Timer varies depending on the Dim used on battles.  
Battles and missions can not be done while the DIGIMON reaches its Rookie generation.

10 Battles

Battles are conducted by leaving the home screen on and then touching the Vital Bracelet screen onto an NFC enabled device, or when challenging yourself in adventure missions (see "8 Missions").  
\*NFC enabled device: devices with card reading functions such as vending machines, ticket gates, and smartphones.  
\*Battles are available once the DIGIMON reaches its Rookie generation.

Home screen → Encounter → Battle → Critical attack → Battle Result

Touch an NFC enabled screen is on to battle.  
After encountering an enemy DIGIMON, press either of the buttons on the right to move to the battle screen.  
DIGIMON's HP gauge  
Yellow: Your DIGIMON's HP  
Red: Enemy DIGIMON's HP  
The battle is automatically conducted after encountering up to 3 random enemy DIGIMON. The DIGIMONS attack you and whoever with the most HP after the last round ends.  
The above image appears when a critical is unleashed.  
\*The timing of when critical attacks are done varies depending on the DIGIMON.  
The results of the battle are displayed here. You can gain VITAL points if victorious.

11 Death and Injury

Healing injuries

Rates screen → Heal mode → Healed

The image on the right shows the DIGIMON injured. DIGIMONS may be injured when losing a battle.  
You will need to place the DIGIMON on the Vital Bracelet in order to heal its injury.  
First injury... 10 minutes  
Second injury... 20 minutes  
Third injury... 60 minutes

The DIGIMON will die if it loses 3 battles in a row while injured.  
\*If you have injured the DIGIMON, you will need to place the Vital Bracelet on the DIGIMON to heal it.  
\*The DIGIMON will die if it loses 3 battles in a row while injured.  
\*If you have injured the DIGIMON, you will need to place the Vital Bracelet on the DIGIMON to heal it.

The DIGIMON will die if it loses 3 battles in a row while injured.  
\*If you have injured the DIGIMON, you will need to place the Vital Bracelet on the DIGIMON to heal it.

Once healed, the DIGIMON will return to the home screen.  
\*The DIGIMON will die if it loses 3 battles in a row while injured.  
\*If you have injured the DIGIMON, you will need to place the Vital Bracelet on the DIGIMON to heal it.

12 Digivolution

The DIGIMON will Digivolve (evolve) based on your VITAL value, trophies, win rate, and Digivolution Timer.

VITAL → Trophies → Win Rate → Digivolution Timer

You can gain VITAL points by clearing missions. Please see "8 Missions" to learn more about gaining VITAL points.  
Gain trophies by clearing missions. Please see "8 Missions" to learn more about gaining trophies.  
The win rate changes depending on battle results. Please see "10 Battles" to learn more to battle.

The timing of when a DIGIMON can Digivolve varies depending on the DIGIMON's generation.  
The DIGIMON may Digivolve into a different form depending on the VITAL value, trophies gain, and win rate.  
\*The Digivolution Timer will start counting from when the DIGIMON Digivolves.  
\*The Digivolution Timer varies depending on the Dim used on battles.  
Battles and missions can not be done while the DIGIMON reaches its Rookie generation.

13 Backup

How to Save Your DIGIMON to Backup

Backup → Confirm backup → Backup progress → Complete → Transition to the home screen

While on the backup screen, press the Confirm Button to move the image shown on the right.  
Use the Select Button to choose either "OK" or "CANCEL". The DIGIMON will be saved in backup if the image shown on the right appears.  
The DIGIMON is currently being saved to backup.  
The save to backup is complete.  
You will return to the home screen once the DIGIMON has been saved to backup.

14 Using the App

Transferring data from the Vital Bracelet to the app

Vital Bracelet → App connection → Waiting to connect → Transfer progress → Complete

While on the app connection screen, press the Confirm Button to touch the touch screen.  
Prepare the app to receive the DIGIMON from the Vital Bracelet. Once ready, tap on the "TRANSFER" button in the app, and then move the smartphone's NFC close to the Vital Bracelet.  
The waiting screen will appear once the Vital Bracelet detects the app.  
The waiting screen will appear once the Vital Bracelet detects the app.  
The DIGIMON is transferring to the app.  
The DIGIMON has transferred to the app.

15 How to Use the Dim

The Dim registers the user information used with the Vital Bracelet when initially inserted. Once used, the Dim cannot be used on other Vital Bracelets.

Dim CARD

Dim is a data memory device that is used as an expansion for the Vital Bracelet.

Area → Gain access to areas and missions  
Data → Gain access to area graphics that lives within the area  
Background → Gain access to area graphics that are used as backgrounds

16 Using the VS Dim

How to send your DIGIMON (Saving to the VS Dim)

Insert the VS Dim → Saving to the VS Dim → Data transfer → Transfer → Transfer complete

Insert the VS Dim into the Dim slot on Vital Bracelet A.  
The image on the right will appear when the VS Dim is inserted while the home screen is on.  
The data stored within the Dim will copy the data into the Vital Bracelet. It will take approximately 50 seconds for the copying to complete.  
The DIGIMON is being transferred.  
The transfer is complete when the image on the right displays.

17 Settings

Setting the time → Wallpaper → Screen brightness → Sound → Reset → Transition to the home screen

Press the Select Button to select the date and time for more details. The Mile count is reset when the date or the time is changed.  
Use the Select Button to select the wallpaper.  
Use the Select Button to select the screen brightness. There are 5 levels of brightness to choose from.  
Use the Select Button to turn the sound on or off.  
Use the Select Button to reset your DIGIMON back to its initial state. Please follow the instructions shown on the screen after the reset.  
\*You cannot use a DIGIMON that has been reset.